



Welcome to a home that gives you more. A home that offers more of everything. More open space to relax, more comforts to rejoice, more privacy to revel in, more convenience to feel fulfilled, more safety to feel at ease, more time with nature, and so much more.

Presenting Reigate Garden, villas from Reigate in the historic city of Calicut. Situated away from the madding crowd, at Vellimadukunnu. Just five minutes of driving can take you to the all major hospitals, College & International School, shopping centers etc.

Yet well-connected for easy reach. Promising a peaceful

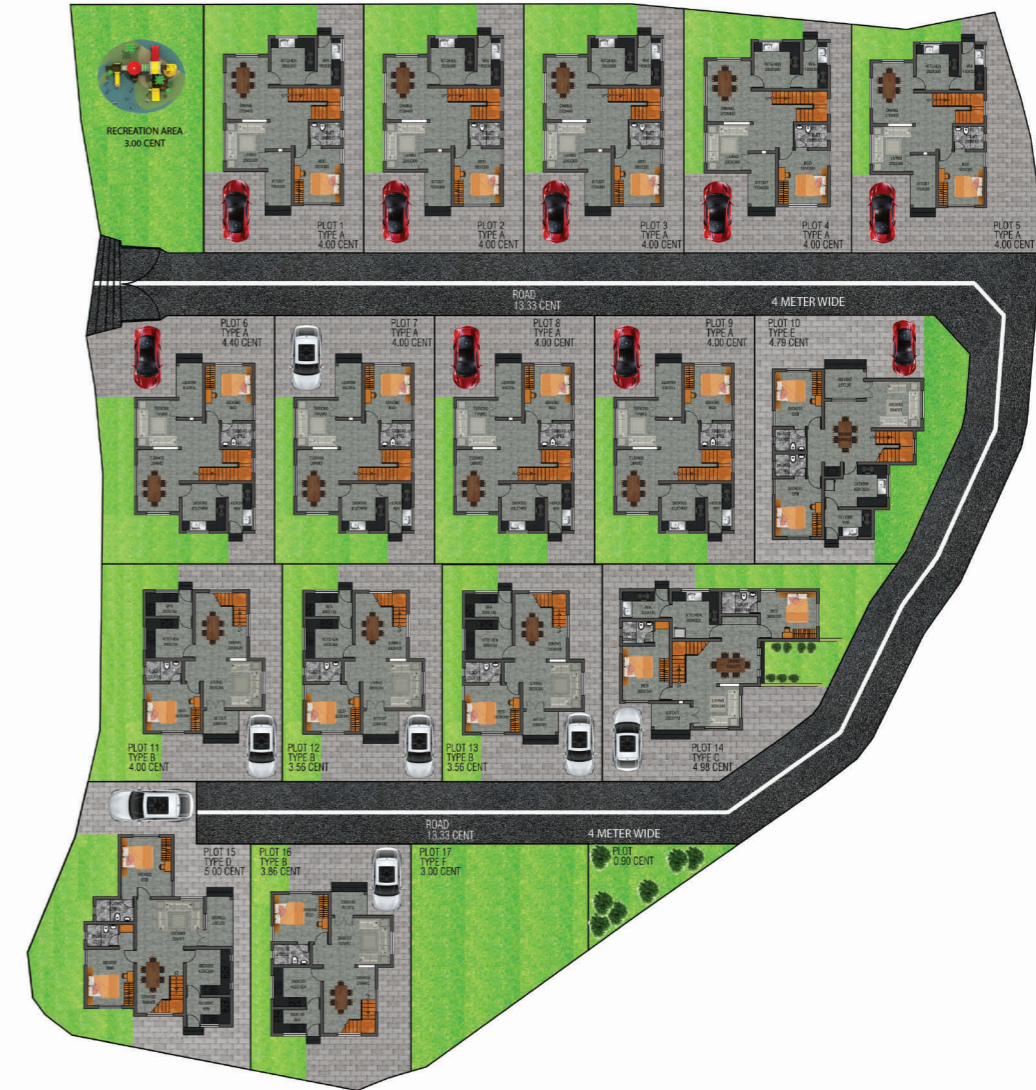
life surrounded by all creature comforts. Rest assured, like every other Reigate home, Reigate Garden features the unique stamp of Reigate's state-of-the-art design and sophistication. Come, experience how it feels to have more in life.

Reigate Garden offers you the calm lifestyle especially designed by Reigate with just 16 houses, these residences offer the close intimacy of life in the town along with all the modern conveniences. Each houses with its own landscaped green spaces in a development spread over 88.5 cents of land.

Here you are away from the

noise and pollution of city life, yet pampered by all comforts. Add to that the acknowledged excellence of Reigate finishes, which attend to every minute detail, designed and tailor made to suit your high standard of living. With Reigate's impeccable attention to designs, details and workmanship,

**you can come home to luxury living! Come and live in the serene ambiance of Reigate Garden!**





**TYPE A**  
4.00 Cent



**Area Details:**

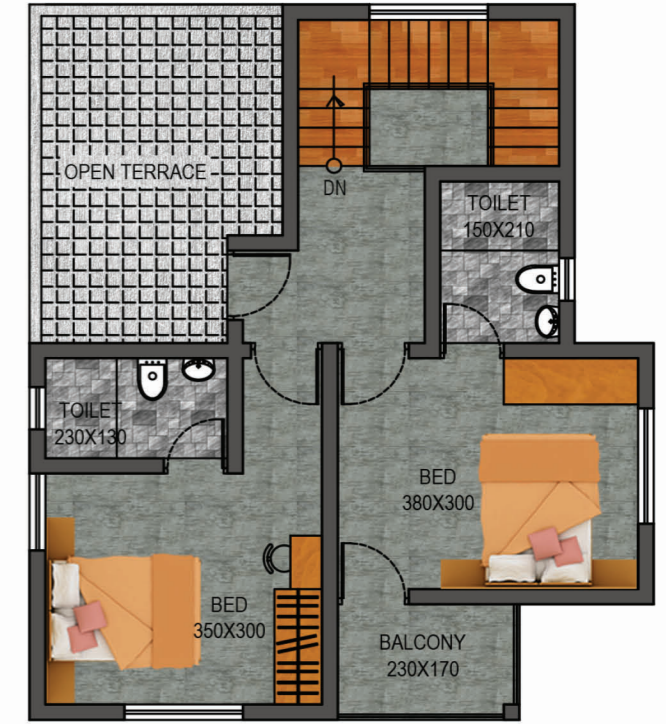
Ground Floor	821 Sqft.
First Floor	599 Sqft.
Porch	162 Sqft.
<b>Total</b>	<b>1582 Sqft.</b>

- » All dimensions are in centimeters.
- » Dimensions and areas shown herein are subject to change as may be required by the authorities.
- » Furniture layout is only indicative.





**TYPE B**  
3.56 Cent



**Area Details:**

Ground Floor	715 Sqft.
First Floor	574 Sqft.
Porch	126 Sqft.
<b>Total</b>	<b>1415 Sqft.</b>

» All dimensions are in centimeters.  
» Dimensions and areas shown herein are subject to change as may be required by the authorities.  
» Furniture layout is only indicative.





**TYPE C**  
4.98 Cent



**Area Details:**

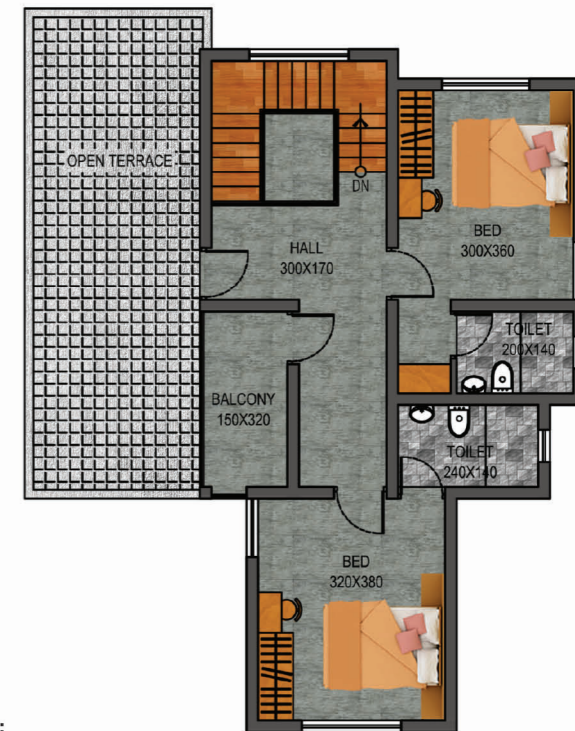
Ground Floor	957 Sqft.
First Floor	726 Sqft.
Porch	162 Sqft.
<b>Total</b>	<b>1845 Sqft.</b>

- » All dimensions are in centimeters.
- » Dimensions and areas shown herein are subject to change as may be required by the authorities.
- » Furniture layout is only indicative.





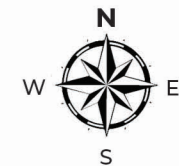
**TYPE D**  
5.00 Cent



**Area Details:**

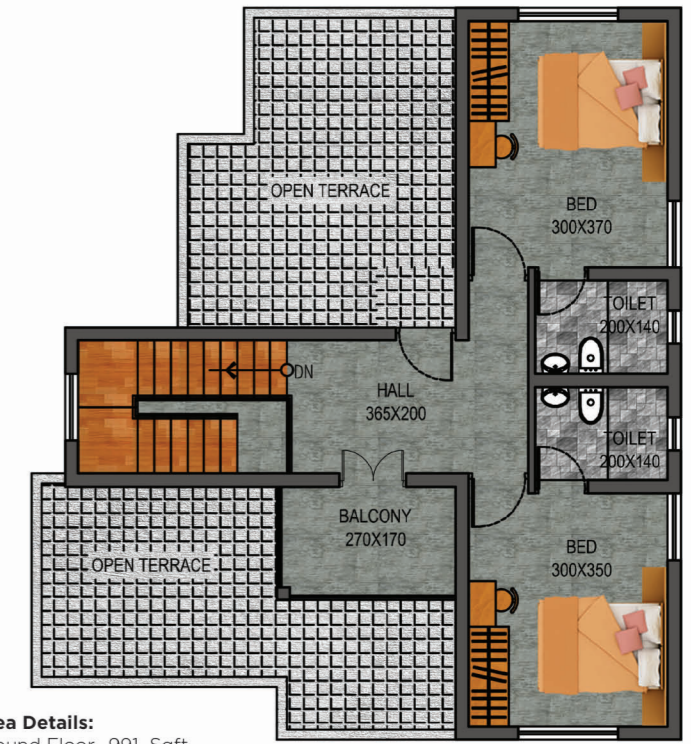
Ground Floor	947 Sqft.
First Floor	674 Sqft.
Porch	162 Sqft.
<b>Total</b>	<b>1783 Sqft.</b>

- » All dimensions are in centimeters.
- » Dimensions and areas shown herein are subject to change as may be required by the authorities.
- » Furniture layout is only indicative.





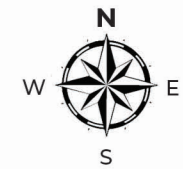
**TYPE E**  
4.79 Cent



**Area Details:**

Ground Floor	991 Sqft.
First Floor	604 Sqft.
Porch	162 Sqft.
<b>Total</b>	<b>1757 Sqft.</b>

» All dimensions are in centimeters.  
 » Dimensions and areas shown herein are subject to change as may be required by the authorities.  
 » Furniture layout is only indicative.





# AMENITIES

- » HEALTH CLUB » 24X7 SECURITY » CCTV SURVEILLANCE
- » STREET LIGHTS » CHILDREN'S PLAY AREA
- » CLUB HOUSE » LANDSCAPING » COMMON WATER TANK
- » COMMON OPEN WELL & BORE WELL

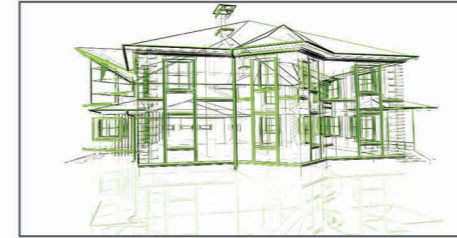


## EASY ACCESS

JDT Higher Secondary School	: 700 mtr
Silver Hills Higher Secondary School	: 2.30 km
IIM, Kunnamangalam	: 7.00 km
Presentation Higher Secondary School	: 6.00 km
Indian Institute of Spices Research	: 2.50 km
Markaz Higher Secondary School	: 6.50 km
Nirmala Hospital	: 700 mtr
Medical College	: 2.50 km
IQRA Hospital	: 3.50 km
Baby Memorial Hospital	: 7.30 km
Civil Station	: 3.90 km
Calicut Town	: 6.50 km
Focus Mall	: 6.50 km
KSRTC	: 7.00 km
Mofussil Bus Stand	: 6.50 km
Railway Station	: 7.90 km
Chevayur Police Station	: 1.00 km
Airport	: 27.00 km



## SPECIFICATIONS:



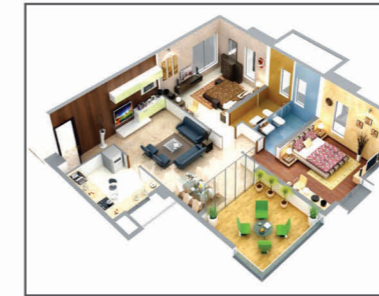
### FOUNDATION

Rubble masonry dry packed foundation & with cement mortar for basement and RCC Plinth beam (Reinforcement: with approved quality steel and cement)



### ROOF

ROOF SLAB: RCC for whole area.



### STRUCTURE

Laterite stone masonry for walls.



### TOILETS

Ceramic tiles for floor and glazed tiles on walls up to a height of 225 cms.



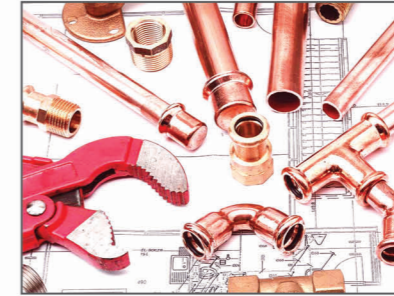
### KITCHEN

Kitchen counter with granite top provided with stainless steel sink. Glazed tile above counter to a height of 50cms.



### PAINTING

Putty finish wall with primer & plastic emulsion for interiors, weather proof paint for exterior, melamine finish for front door and enamel paint for all other doors and windows.



### PLUMBING

White EWC in toilets. Hot & cold water provision with mixer taps and shower, Provision for fixing wall mounted geysers and exhaust fans.



### FLOORING

Vitrified tile flooring of size 60x60cm in size inside the Villas and ceramic tiles in work area, toilets.



### SANITARY FIXTURES

White half pedestal with ordinary wash basin in all toilets and common wash.



### DOORS

Hard wood front door frame and shutter with polish work and Laminated skin shutter for other doors.



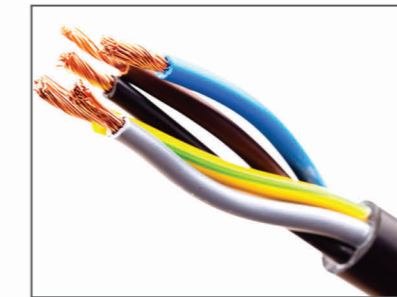
### WINDOWS

Hardwood frame with MS Rod and smoke glass.



### WATER SUPPLY

Well water connected to all toilets, kitchen and work area



### ELECTRICAL

Concealed copper wiring, provisions for adequate light, fan and other electrical points in each room



### FIRE FIGHTING PROVISIONS

One number home use Fire Extinguisher will be provided in each Villa



**REIGATE GREENS**  
Malaparamba, Calicut



**REIGATE MARINA**  
4th Gate, Calicut



**REIGATE MARVELLA**  
Chevayur, Calicut



**REIGATE WAYSIDE**  
Vellimadukunnu, Calicut



**REIGATE HILLS**  
Moozhikkal, Calicut



**GARDINER HEIGHTS**  
Nadakkavu, Calicut



**BEDFORD ENCLAVE**  
Kovoor, Calicut

Marketed By:  
**Reigate Builders (P) Ltd,**  
2nd Floor, City Corner Building, Kannur Road,  
P.O. Nadakkavu, Opp. Bismi Hyper Market, Calicut - 673011  
Office: +91 495 2369200, Mobile: +91 9495592200  
Email: sales@reigatebuilders.com

**Overseas Contact:**  
Qatar : Haksar +974 33238800  
UAE : Nassar (Al Maha) +971 558332166  
Muscat : Muhammed Asharaf +968 97149550



[www.reigatebuilders.com](http://www.reigatebuilders.com)